

K8061 / VM140 Getting Started

Installation Guide

Thank you for buying the K8061 / VM140 USB Interface Board! This document will guide you through the necessary steps to install the board on your system.

Plugging in your board for the first time

First, you will need to plug your board into an available USB (1.1/2.0) port on your computer so Windows can detect this new device.

Follow the instructions to install the hardware driver.

Step-by-step screenshot images for following operating systems are included here for Windows 7.

Note that you need administrative privileges to install new hardware.

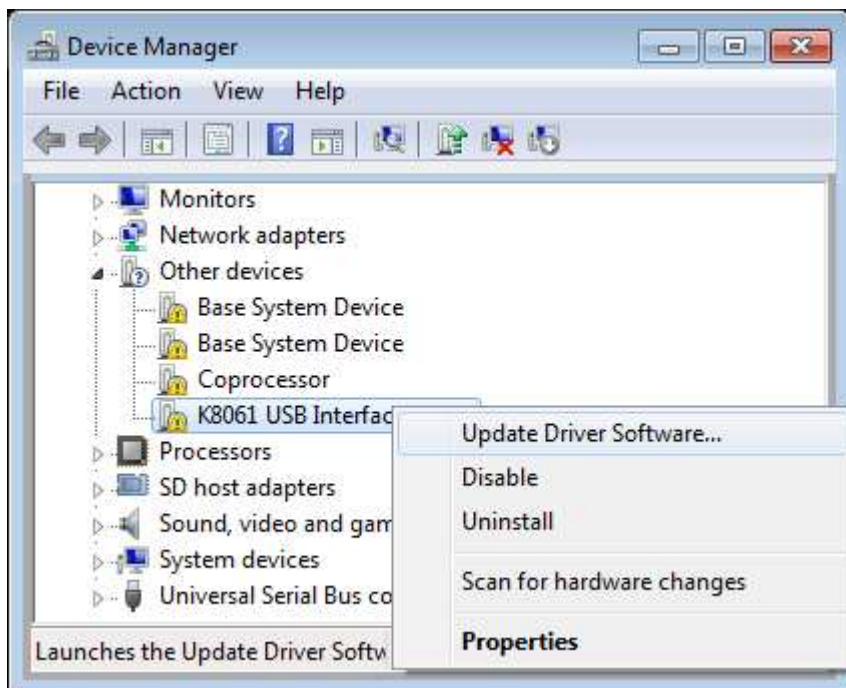
Hardware Installation

Windows 7

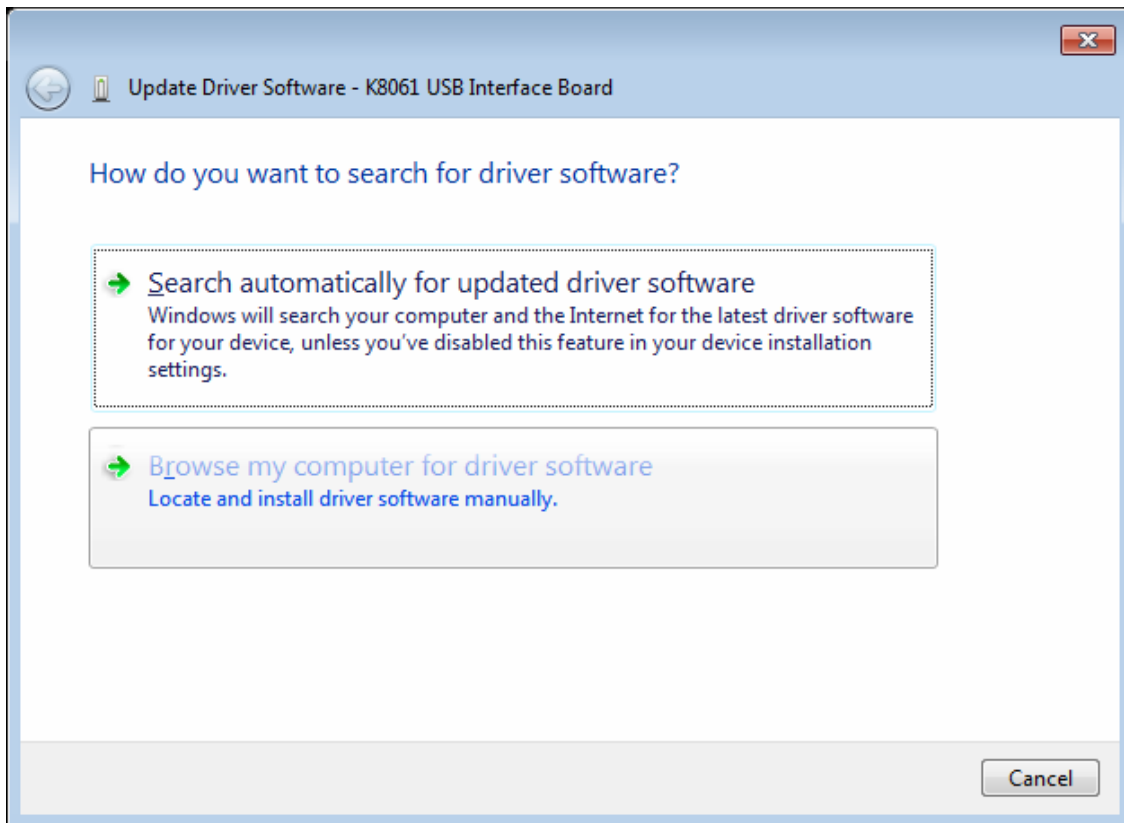
After you've plugged in your device you should be prompted with the Windows *'Found New Hardware Wizard'*.

If the wizard did not open, you can open it manually through the following steps:

- Press the **Windows key + R**
- Type **devmgmt.msc** and press **OK**
- Search for a 'K8061 USB Interface Board' entry under the *Other devices* category
- Right-click the entry and click **Update Driver Software...**

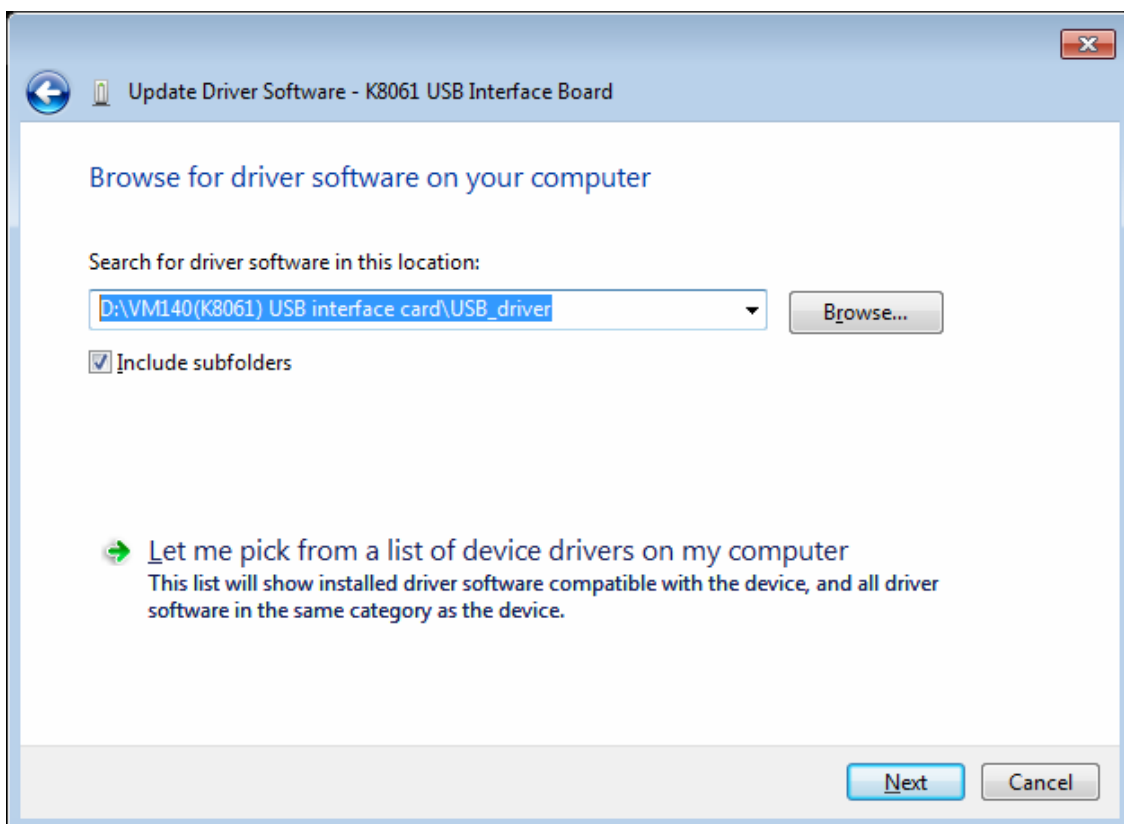


You should now be prompted with the **'Update Driver Software'** dialog.



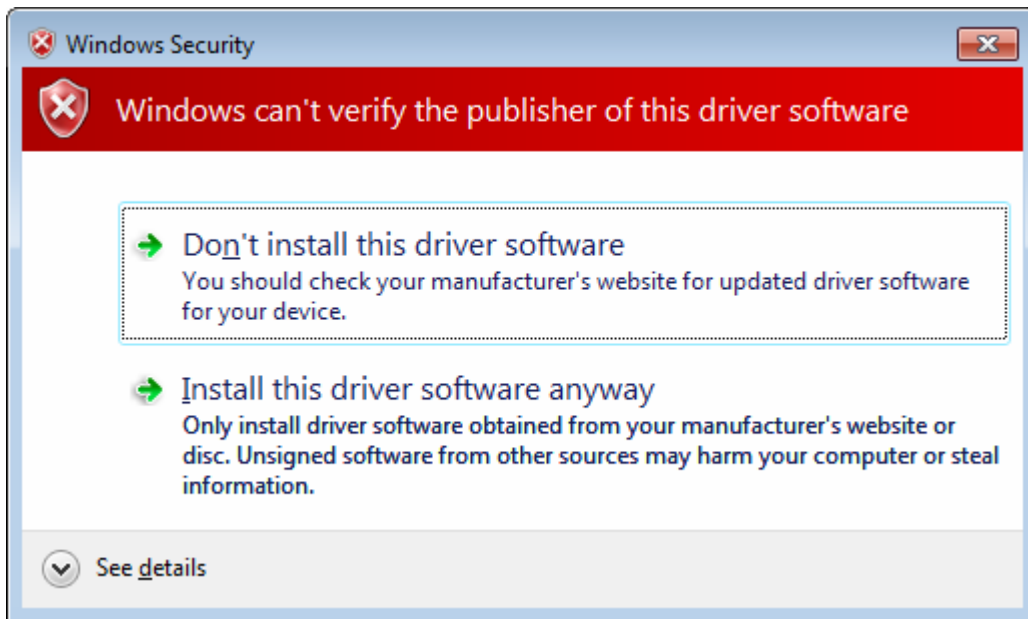
Select '**Browse my computer for driver software**'.

You will be asked for the location of your driver files. Use **Browse** to locate the driver file folder.

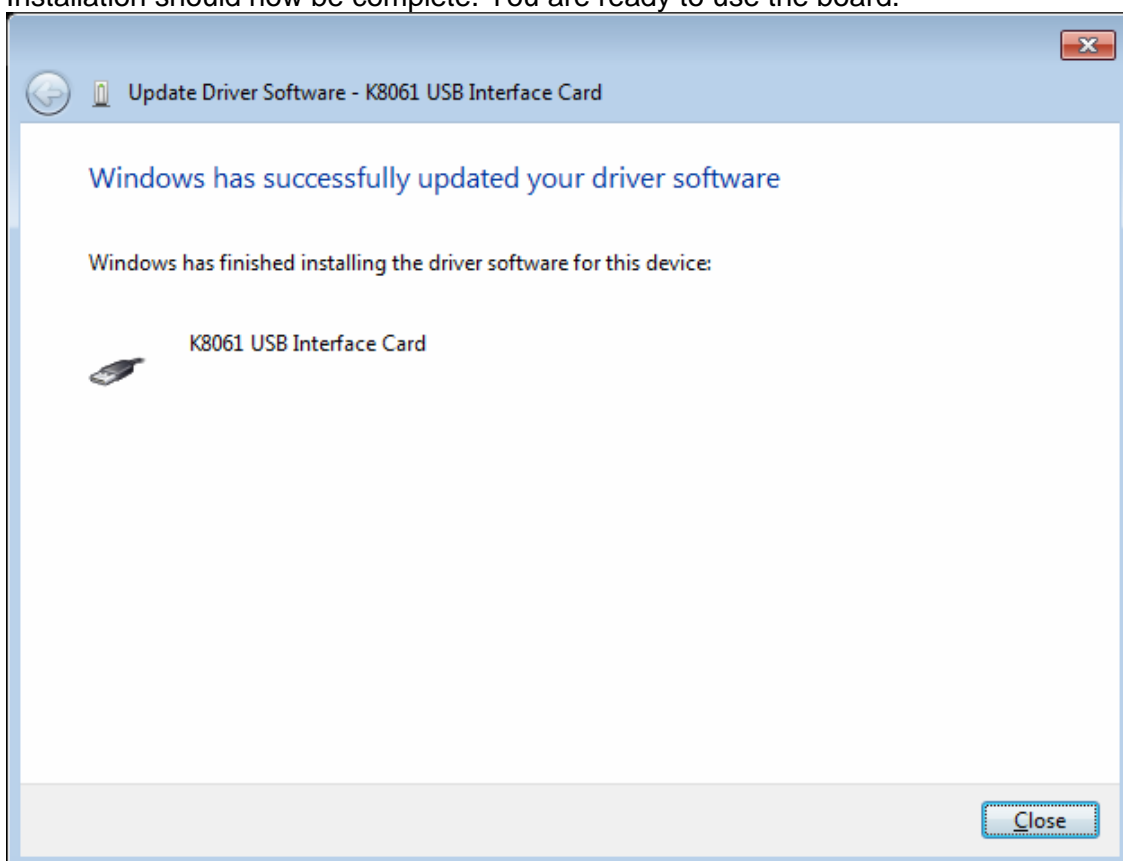


Click '**Next**' to continue.

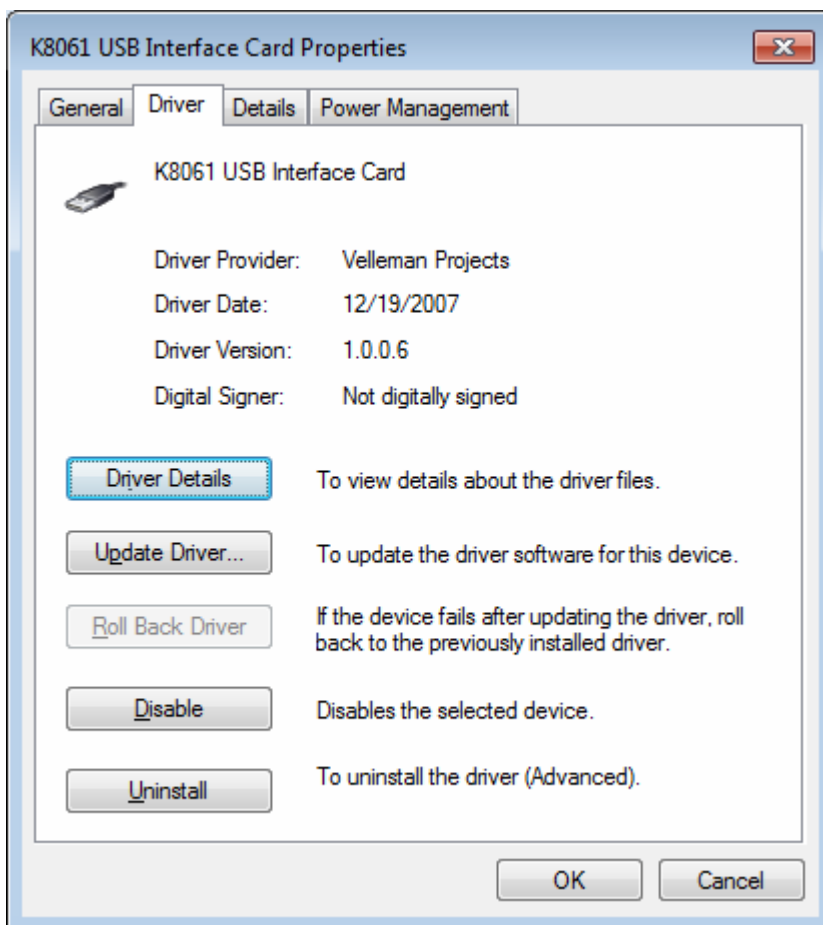
When you receive this warning, click '**Install this driver software anyway**'. This cannot harm your computer since it is safe to use our driver. Make sure you downloaded the driver or installation package from the Velleman website.



Installation should now be complete. You are ready to use the board.



You can use the Device Manager to check the driver is properly installed:



Running the K8061 / VM140 Demo application

This software package contains ready to use standalone demo application to be able to test your board. The demo application is located in the **\Demo** folder of the software package.

Installing the K8061.DLL and MPUSBAPI.DLL

Before running the example applications, the files **K8061.DLL** and **MPUSBAPI.DLL** from the folder **\DLL_v3.0.0.1** have to be copied to the Windows' **System32** folder. In 64-bit environment the files must be copied to Windows' **SysWOW64** folder.

Developing your own software

The K8061 / VM140 USB Interface Board comes with a library (DLL) that can be used to communicate with

the board in any programming language. The software package includes examples on how to use this DLL in some of the most popular programming languages. At this time the following programming languages / environments are supported:

- Microsoft Visual Basic 2008 Express Edition
- Microsoft Visual C++ 2008 Express Edition
- Microsoft Visual C# 2008 Express Edition
- Microsoft Visual Basic 6.0
- Microsoft Excel VBA
- Borland Delphi 5
- Borland C++Builder 6
- Bloodshed Dev-C++

Technical Support

Velleman Projects Service Forum

In case you have a question or problem with the K8061 / VM140 board, you can visit our online forum for help. This forum is frequented by employees here at Velleman and other Velleman Projects enthusiasts. To visit the forum enter the following URL in your browser:

<http://forum.velleman.be/>