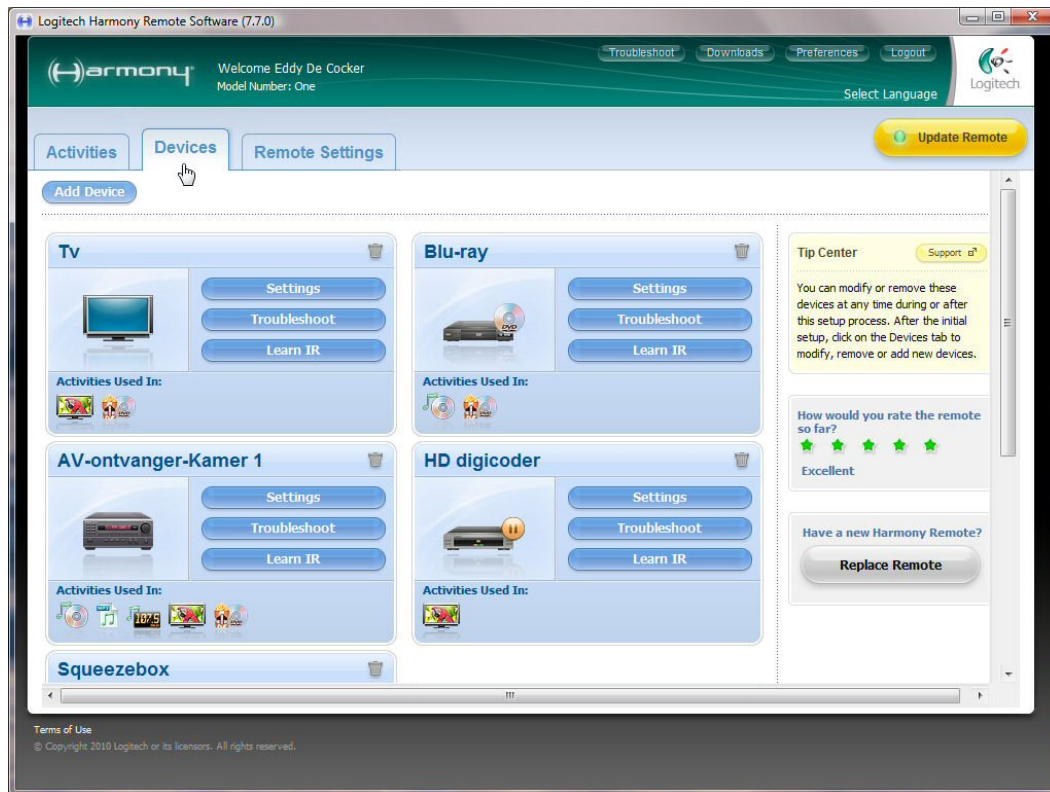
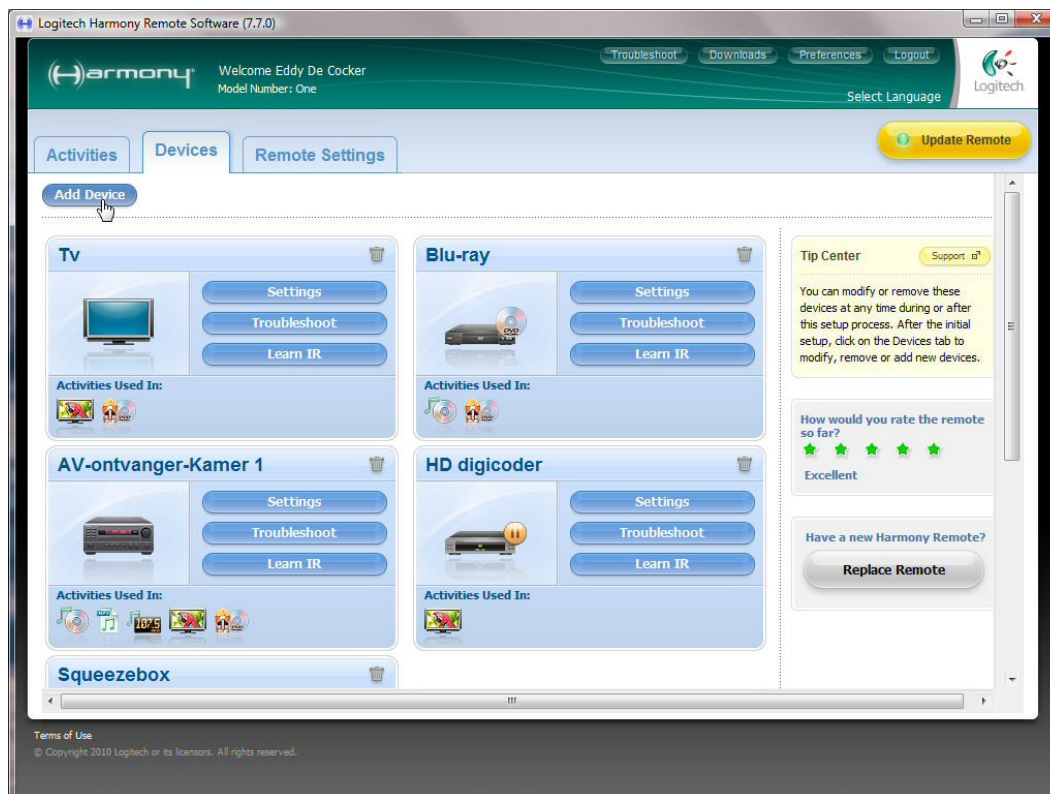


Logitech Harmony™ Configuration for Velbus

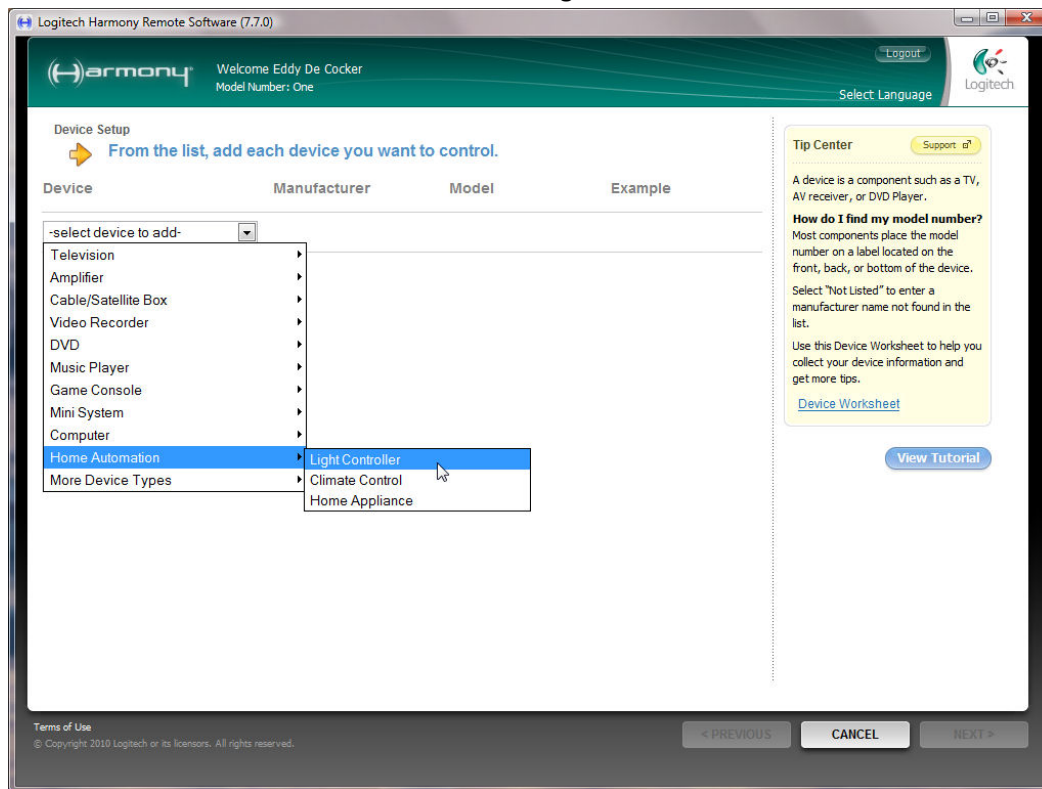
Start the Logitech Harmony™ configuration software and click on “Devices”.



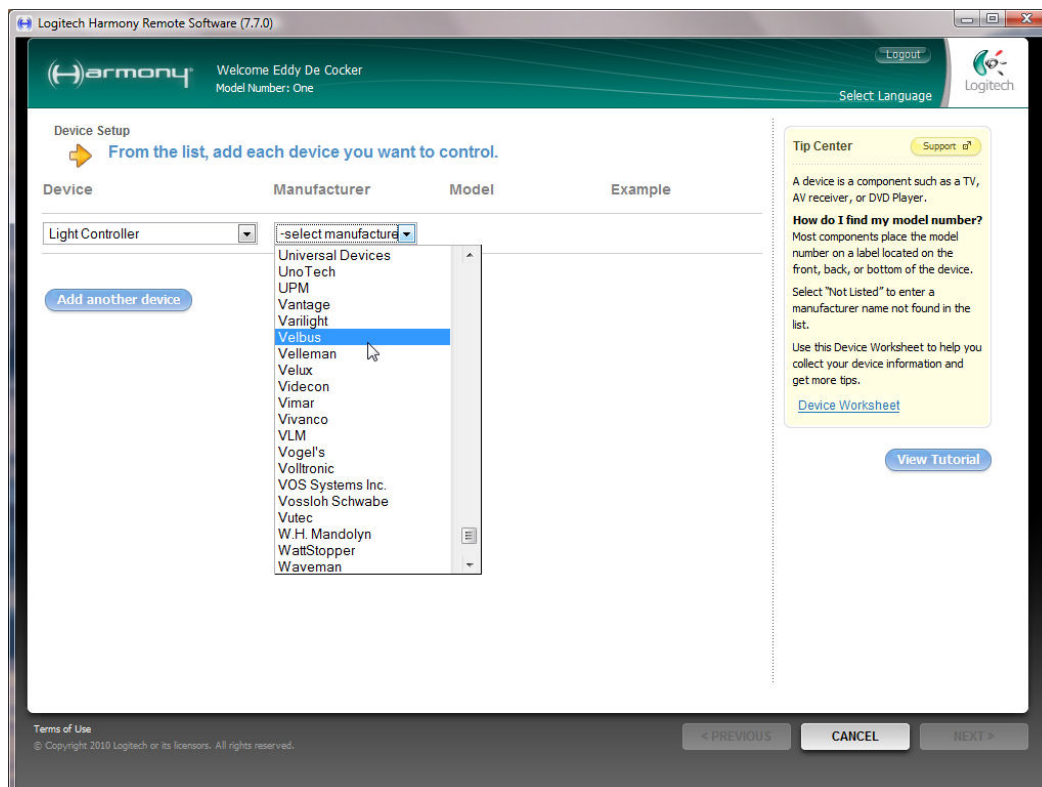
Click on “Add Device”.



Select “Home Automation” and then select “Light Controller”.



Select manufacturer “Velbus”.



Enter the model “VMB8IR” and complete the wizard

The screenshot shows the 'Device Setup' screen in the Logitech Harmony Remote Software (7.7.0). The interface is in English, with a welcome message to 'Eddy De Cocker' and 'Model Number: One'. The main section is titled 'From the list, add each device you want to control.' It features a table with columns: Device, Manufacturer, Model, and Example. The 'Device' column has a dropdown menu with 'Light Controller' selected. The 'Manufacturer' column has a dropdown menu with 'Velbus' selected. The 'Model' column has a text input field with 'VMB8IR' entered. The 'Example' column shows 'VMB4PD'. Below the table is a button labeled 'Add another device'. On the right side, there is a 'Tip Center' section with a 'Support' link and a 'View Tutorial' button. At the bottom, there are navigation buttons: '< PREVIOUS', 'CANCEL', and 'NEXT >'. The footer includes 'Terms of Use' and '© Copyright 2010 Logitech or its licensors. All rights reserved.'

Add labels to the buttons; remove unused channels (if any) and change the order of the buttons to match your own preferences.

The screenshot shows the button configuration screen for 'Lichtcontroller' in the Logitech Harmony Remote Software (7.7.0). The interface is in English, with a welcome message to 'Eddy De Cocker' and 'Model Number: One'. The main section is titled 'Lichtcontroller' and includes a note: 'The remote buttons have already been setup to give you control of this device.' There are two tabs: 'Standard Buttons' and 'Additional Buttons'. The 'Standard Buttons' tab is active, showing a list of buttons with their labels and commands. The list is as follows:

| | Label | Command |
|---|---------------|----------|
| 1 | Sitting Area | Channel1 |
| 2 | Eating Area | Channel2 |
| 3 | Spots | Channel3 |
| 4 | Open Shutter | Channel4 |
| 5 | All Off | Channel5 |
| 6 | Close Shutter | Channel6 |

Below the list are buttons for 'Add New Page' and 'Reset to Defaults'. On the right side, there is a 'Tip Center' section with a 'Support' link and a 'Learn Command' button. At the bottom, there are navigation buttons: '< PREVIOUS', 'CANCEL', and 'DONE'. The footer includes 'Terms of Use' and '© Copyright 2010 Logitech or its licensors. All rights reserved.'

Complete the wizard and update the remote control.

Tip:

Buttons that are linked to the LCD only transmit the Infrared code briefly. Sometimes a button with a longer response time (1, 2 or 3 seconds) is needed or one wants to control a dimmer with it. To achieve this, the code can be linked to a standard button or an action for lighting control should be added. For this last method all buttons must be redefined as described in “adding devices”. Now all buttons will transmit IR codes as long as the button is operated.