

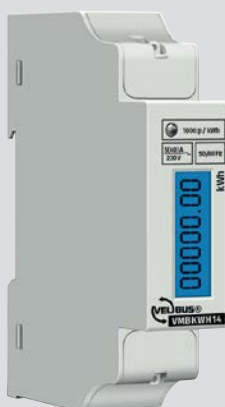
VMBKWH14 datasheet

Single phase energy meter for DIN rail mounting, 5 (40) A, connectable to VMB7IN

This single-phase DIN rail kWh meter is part of a new generation of single-phase electronic watt-hour meters, adopting micro-electronic techniques, LSI circuits and advanced digital and SMT techniques.

The meter is in conformity with the relevant technical requirements of Class 1, Class 2 and IEC62052-11, IEC62053-21.

This module can be connected to the Velbus installation by using a VMB7IN, 7-channel input module.



Features

- LCD display (with blue backlight)
- pulse output
- LED indicator

Specifications

- with PNP transistor
- not resettable

voltage	230 V
current	5 (40) A (Max. deviation: +/-1,5% between 5% of Ib and IMAX)
accuracy class	1.0
frequency	50 / 60 Hz
display mode	LCD 5+2 digits = 99999.99 kWh
power consumption	<= 0.4 W (8 VA)
temperature range	-20 to 65 °C
LED indicator	1 flash per pulse
pulse output	1000 p/kWh
	voltage: 12 to 27 V
	current: 27 mA
	pulse width: 90 ms
connection cables	min. 2 mm ² , max. 16 mm ²
torque	max. 110 Nm
dimensions (LxWxH)	80 x 18 x 60 mm
width	1 DIN module

Protocol manuals for developers: available for download at <https://github.com/velbus>

VELBUS • VMBKWH14

Legen Heirweg 33 • 9890 Gavere • Belgium
velbus.eu